

#4

ADVENTURE TIME



ADVENTURE TIME™

CREATED BY

Pendleton Ward

WRITTEN BY

Ryan North

ILLUSTRATED BY

Shelli Paroline & Braden Lamb

LETTERS BY

Steve Wands

"The Ultimate Party Dip"

WRITTEN & ILLUSTRATED BY

Chris "Elio" Eliopoulos

COVER BY

Chris Houghton

with colors by Kassandra Heller

DIGITAL EDITOR:

Megan Brown

DIGITAL DESIGNER:

Sarah Rockwell

ORIGINAL EDITOR:

Shannon Watters

ORIGINAL ASSISTANT EDITOR:

Adam Staffaroni

ORIGINAL DESIGNER:

Stephanie Gonzaga

ONIPRESS.COM    /ONIPRESS

PUBLISHED BY ONI-LION FORGE PUBLISHING GROUP, LLC. Hunter Gorinson, president & publisher
Sierra Hahn, editor in chief • Troy Look, vp of publishing services • Spencer Simpson, vp of sales • Angie Knowles, director of design & production • Daniel Crary, director of marketing • Katie Sainz, director of sales, book market • Jeremy Colfer, director of development • Chris Cerasi, managing editor • Bess Pallares, senior editor • Grace Scheipeter, senior editor • Karl Bollers, editor • Megan Brown, editor • Matt Dryer, editor • Gabriel Granillo, editor • Jung Hu Lee, assistant editor • Michael Torma, senior sales manager • Andy McElliott, operations manager • Sarah Rockwell, senior graphic designer • Carey Soucy, senior graphic designer • Winston Gambro, graphic designer • Matt Harding, digital prepress technician • Sara Harding, executive coordinator • Kaia Rokke, marketing & communications coordinator • Joe Nozemack, publisher emeritus

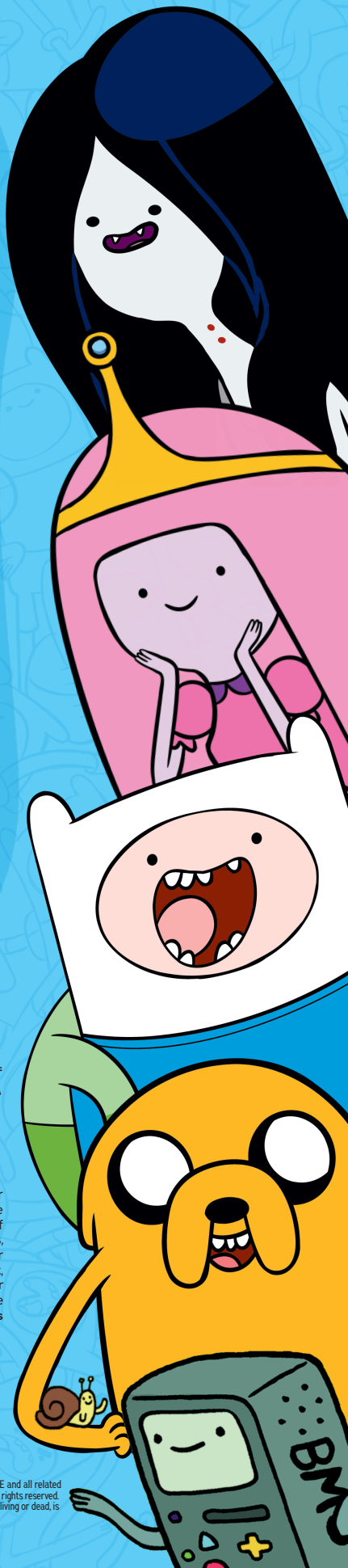
WITH SPECIAL THANKS TO

Kurtis Estes and the wonderful folks at WB and Cartoon Network.



Copyright © 2024 Cartoon Network.
ADVENTURE TIME and all related characters and elements
© & ™ Cartoon Network. WB SHIELD: © & ™ WBEL. (s24)

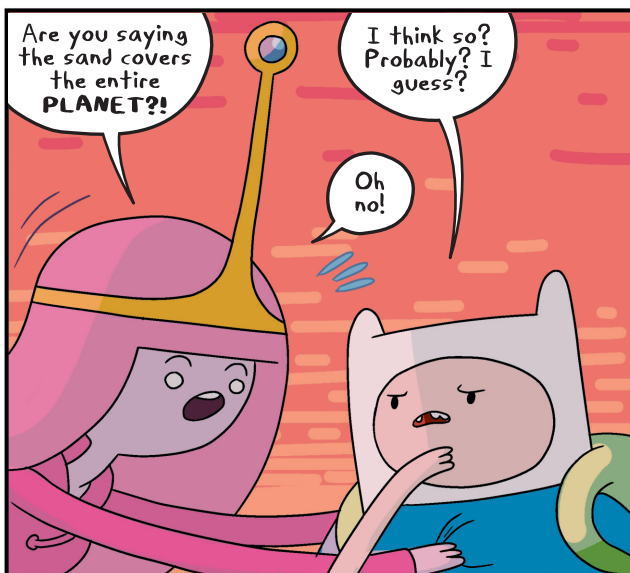
Adventure Time #4, May 2012. Published by Oni-Lion Forge Publishing Group, LLC, 1319 SE Martin Luther King Jr. Blvd., Suite 216, Portland, OR 97214. ADVENTURE TIME and all related characters and elements are trademarks of and © 2024 Cartoon Network. All rights reserved. Oni Press logo and icon are ™ & © 2024 Oni-Lion Forge Publishing Group, LLC. All rights reserved. Oni Press logo and icon artwork created by Keith A. Wood. The events, institutions, and characters presented in this book are fictional. Any resemblance to actual persons, living or dead, is purely coincidental. No portion of this publication may be reproduced, by any means, without the express written permission of the copyright holders.



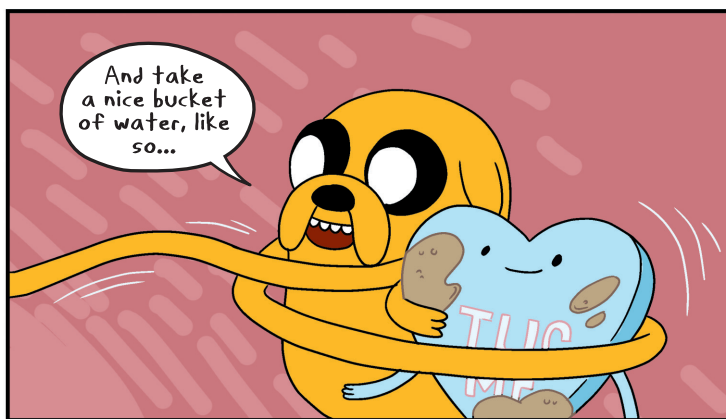


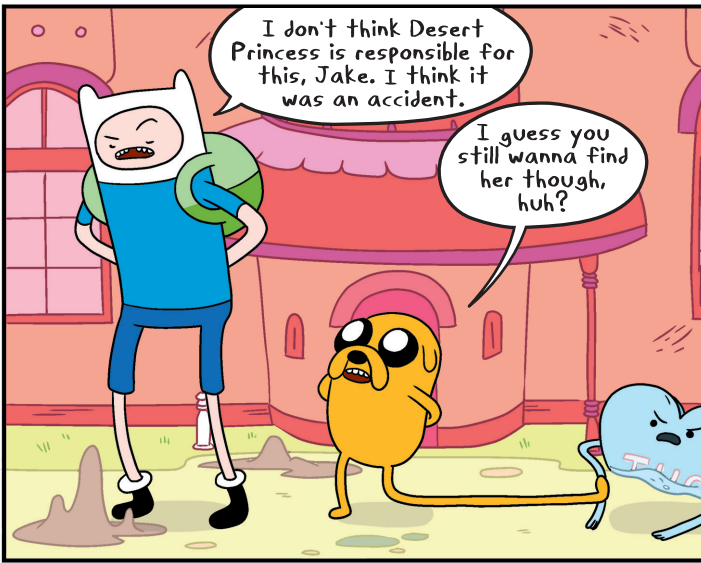


BEHIND THE SCENES FACT: All of Adventure Time, the show AND the comic, was leading up to Finn's pun in panel three. ALL OF IT.

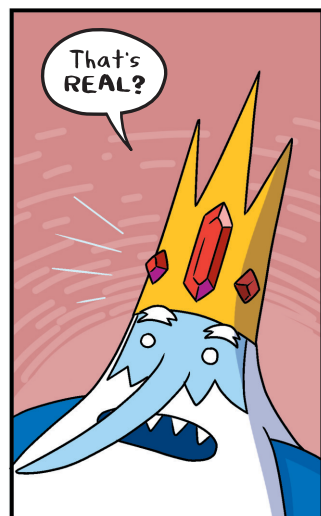
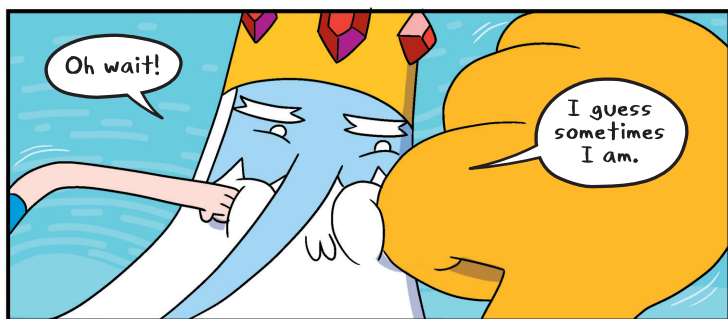
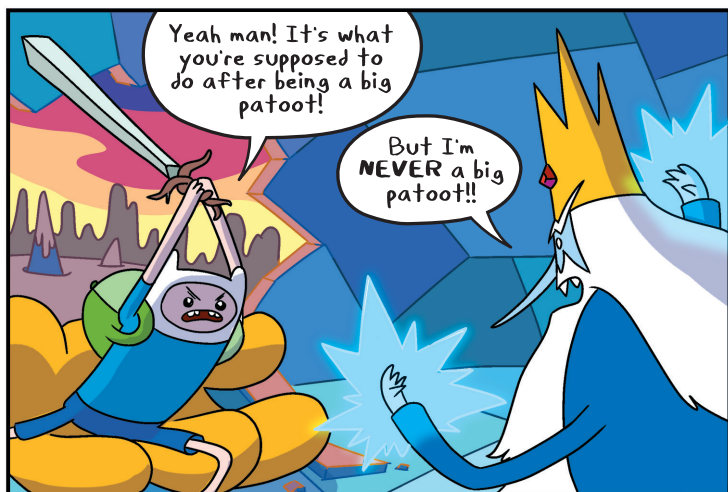


Dear Breakfast Kingdom: I would live in you. I would take all my meals in you, including lunch and dinner. *I'M EVEN INCLUDING DESSERT.* I'm not messing around here, Breakfast Kingdom.

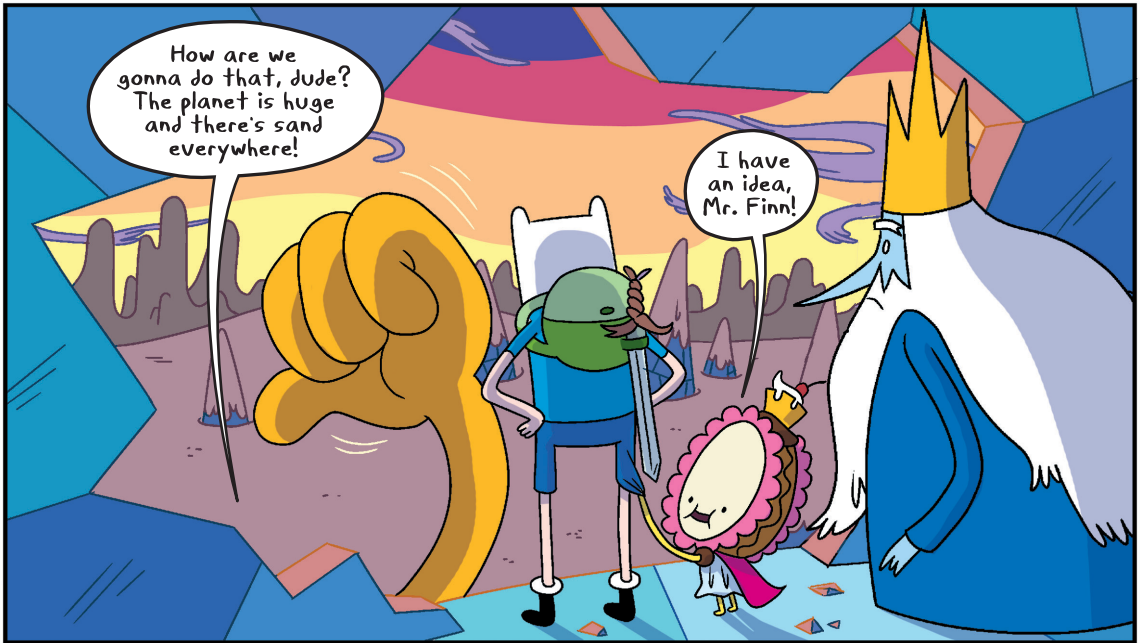


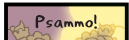
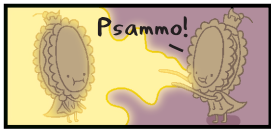
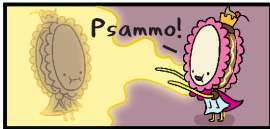
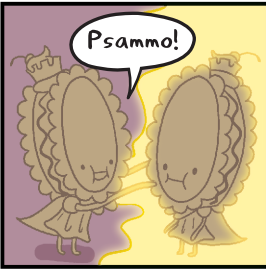
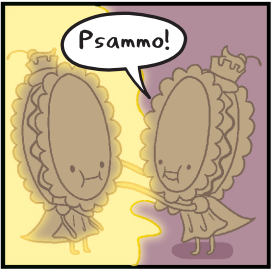
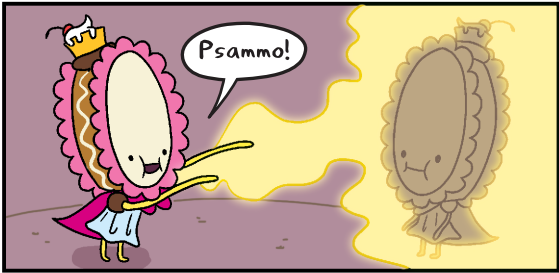
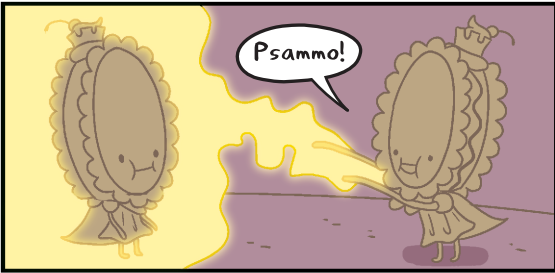


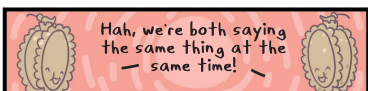
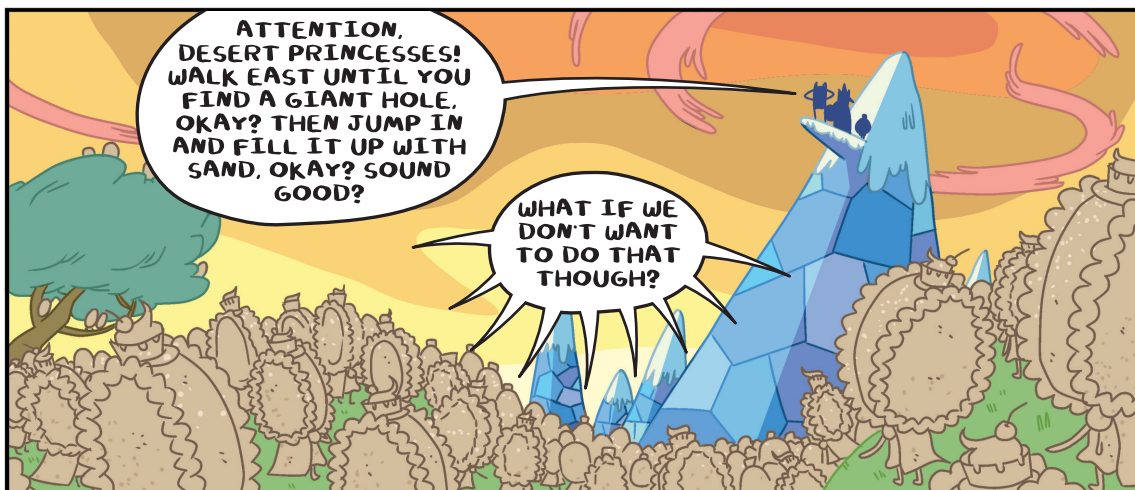
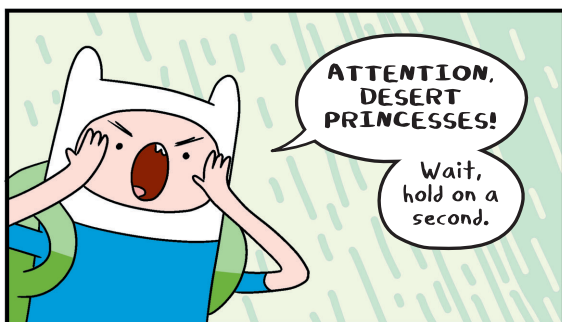
PRO TIP: if you want to grow up to marry a princess, do exactly the opposite of whatever Ice King does! You'll be off to a TERRIFIC start.

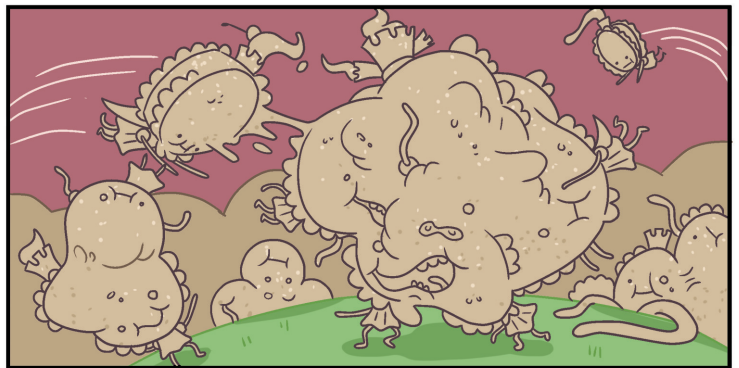
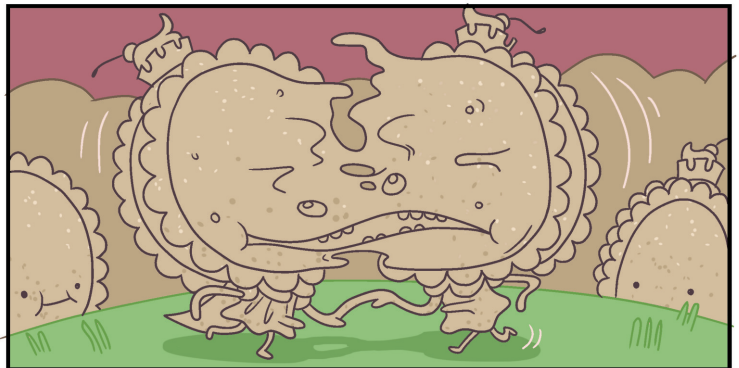
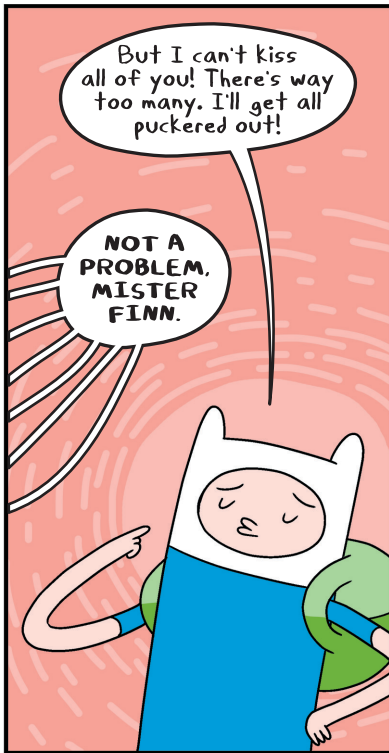


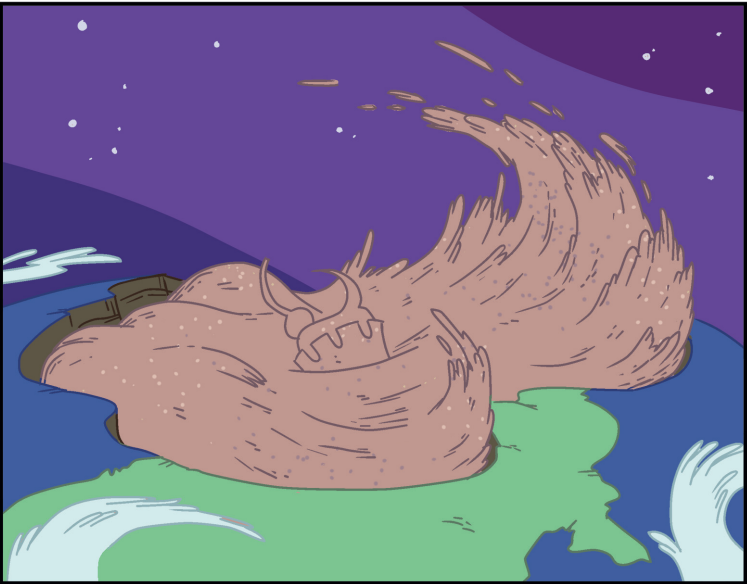
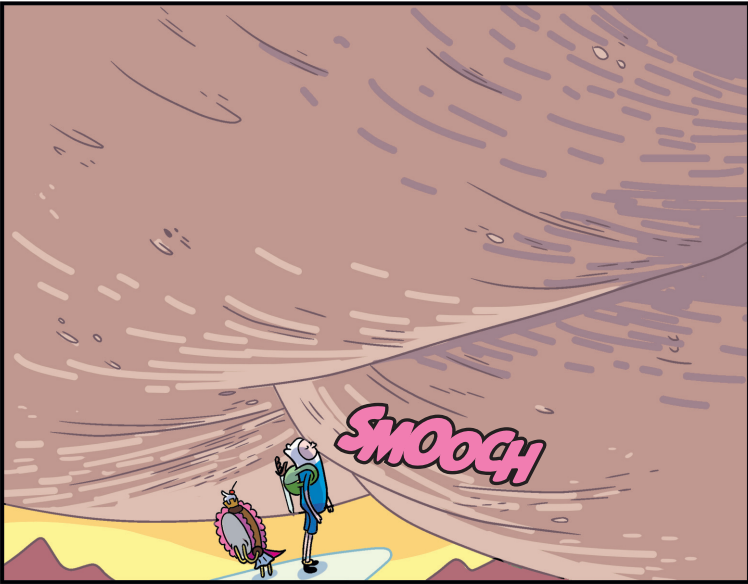
I thought it was just a new form of ice: "crunchy ice that tastes bad in my drinks and also fails to cool them?"



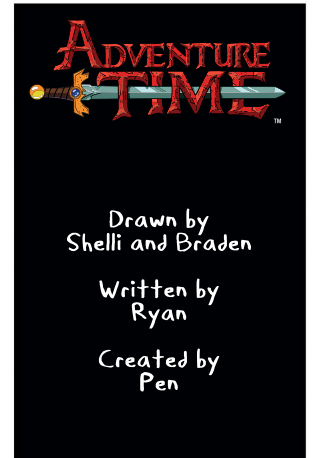
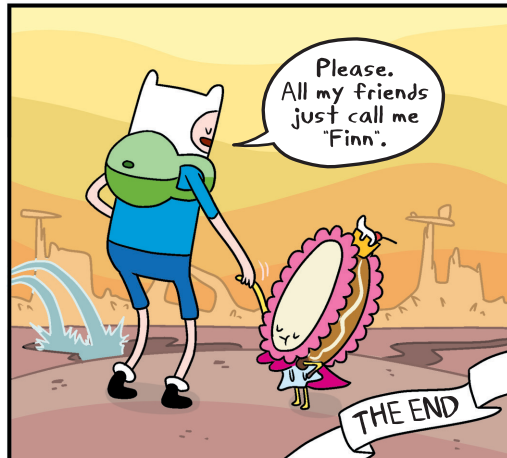
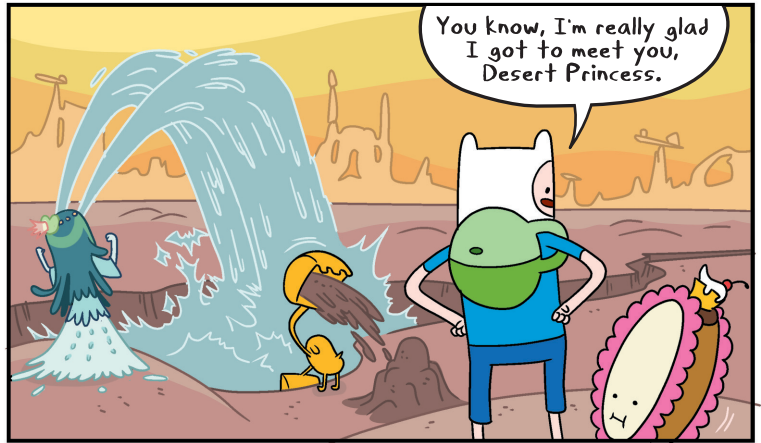
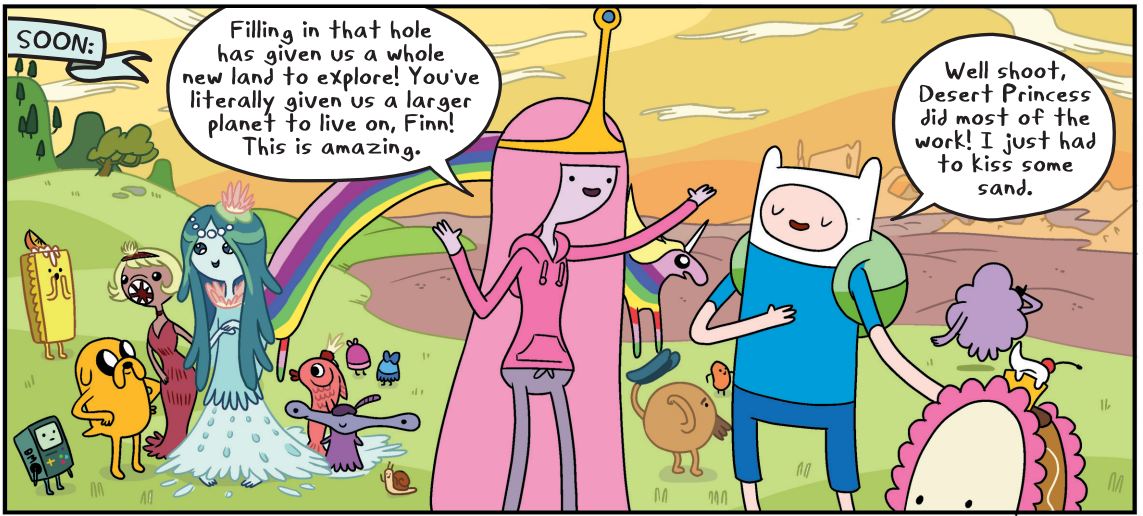


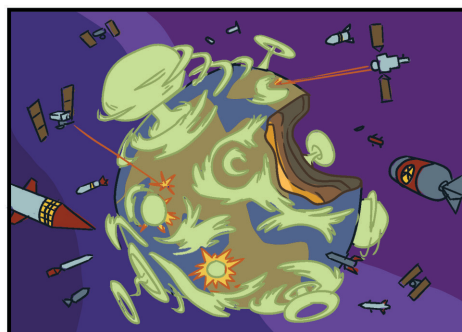






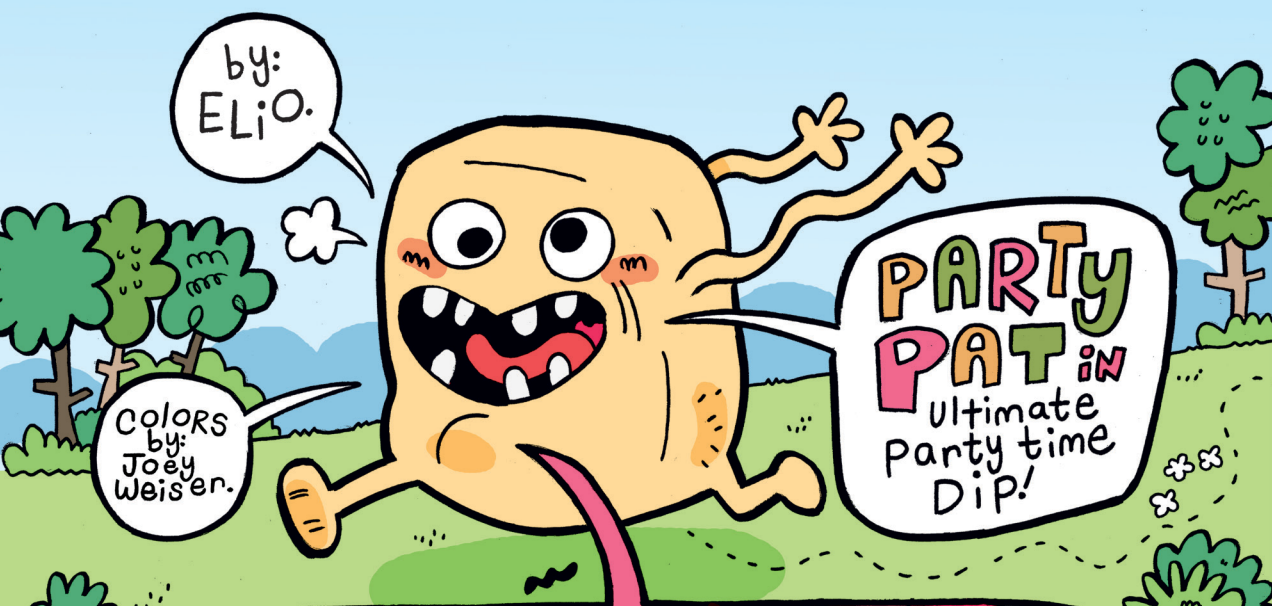
Suddenly everyone says "Hey, does it seem like the Earth's gravitational pull has increased on you too?"





NOW:





by:
ELi.O.

Colors
by:
Joey
Weiser.

**PARTY
PAT** in
ultimate
party time
Dip!



How is
the party
treating
you so
far, my
bear
clan?

Best
Party
yet!

Thank
you,
party
pat!



you're our chief
and you know
how to
rock!

And rock it
I shall. I
live to
party with
my
people.

